

Human CXCL16 ELISA Kit

[Catalog No] EK1254

[SIZE] 48T/96T

[INTENDED USE] For the quantitative determination of human Chemokine (C-X-C motif) ligand 16 (CXCL16) concentrations in cell culture supernates, serum and plasma.

[INTRODUCTION]

Chemokine (C-X-C motif) ligand 16 (CXCL16) is a small cytokine belonging to the CXC chemokine family. It is a type I membrane protein with 254 amino acids. The gene for human CXCL16 is located on chromosome 17. CXCL16 is produced by dendritic cells found in the T cell zones of lymphoid organs, and by cells found in the red pulp of the spleen. Expression of CXCL16 is induced by the inflammatory cytokines IFN-gamma and TNF-alpha. CXCL16 interacts with the chemokine receptor CXCR6, also known as Bonzo. The administration of folinic acid, which forces the methylation of CXCL16, induces high levels of methylation of the CXCL16 gene promoter in colon, ileum and lung and causes iNKT cells accumulation in these tissues.

[PRINCIPLE OF THE ASSAY]

Human CXCL16 ELISA Kit is based on the quantitative sandwich enzyme-linked immunosorbent assay technique to measure concentration of human CXCL16 in the samples. A monoclonal antibody specific for human CXCL16 has been immobilized onto microwells. Standard and samples are pipetted into the wells, and CXCL16 present is bound by the immobilized antibody. After washing away any unbound substances, a biotin-linked detect antibody specific for CXCL16 is added to the wells. Following a wash to remove any unbound antibody-biotin reagent, streptavidin-HRP is added. After washing, substrate solution reacts with HRP and color develops in proportion to the amount of CXCL16 bound by the immobilized antibody. The color development is stopped by addition of acid and the optical density value is measured by microplate reader.

[MATERIALS PROVIDED]

PART	PART #	EK1254-48	EK1254-96
Coated Microplate	EK1254P	48T	96T
Standard	EK1254S	1 vial	2 vials
Detect antibody	EK1254D	1 vial	1 vial
Standard Diluent	E0260	5ml	5ml
Streptavidin-HRP	E0290	1 vial	1 vial
Assay Buffer (10x)	E0310	5ml	5ml
TMB	E0230	6ml	11ml
Stop Solution	E0300	11ml	11ml
Washing Buffer (20x)	E0281	50ml	50ml
Adhesive Film	E0200	6	6

Note: Components from reagent kits of different batch numbers must not be used interchangeably.

OTHER SUPPLIES REQUIRED

- 1) Microplate reader capable of measuring absorbance at 450 nm, with correction wavelength set at 570 nm or 630 nm.
- 2) Pipettes and pipette tips.
- 3) 50 µl to 300 µl adjustable multichannel micropipette with disposable tips.
- 4) Multichannel micropipette reservoir.
- 5) Beakers, flasks, cylinders necessary for preparation of reagents.
- 6) Deionized or distilled water.
- 7) Polypropylene test tubes for dilution.

[STORAGE]

Store at 2-8°C; refer to the kit label for expiration date.

For opened kits:

Pre-coated microplate: Can be stored at 2-8°C for approximately 1 month (return unused strips to the aluminum foil bag and reseal).

Standard: Can be stored at -20°C for approximately 1 month (discard after single-use reconstitution).

Other components: Can be stored at 2-8°C for approximately 1 month.

[SAMPLE COLLECTION AND STORAGE]

1) **Cell Culture Supernates** – Remove particulates by centrifugation and assay freshly prepared samples immediately or aliquot and store samples at ≤ -20°C for later use. Avoid repeated freeze-thaw cycles.

2) **Serum** – Use a serum separator tube (SST) and allow samples to clot for 30 minutes before centrifugation for 10 minutes at 1,000 × g. Remove serum and assay freshly prepared samples immediately or aliquot and store samples at ≤ -20°C for later use. Avoid repeated freeze-thaw cycles.

3) **Plasma** – Collect plasma using EDTA, citrate or heparin as anticoagulant. Centrifuge at 1,000 × g within 30 minutes of collection. Assay freshly prepared samples immediately or aliquot and store samples at ≤ -20°C for later use. Avoid repeated freeze-thaw cycles.

4) might be suitable for use in the assay. Cell culture supernates, serum and plasma were tested with this assay. Dilution with Assay Buffer may be needed.

Note: Samples containing a visible precipitate must be clarified prior to use in the assay. Do not use grossly hemolyzed or lipemic specimens.

If samples are to be run within 24 hours, they may be stored at 2 to 8°C. For longer storage, aliquot samples and store frozen at -20°C. Avoid repeated freeze-thaw cycles.

[SAMPLE PREPARATION]

Normal serum and plasma samples require a 50-fold dilution. A suggested 50-fold dilution is 10µl sample + 490 µl Assay Buffer (1x).

[REAGENT PREPARATION]

Bring all reagents and samples to room temperature before use.

If crystals form in the Buffer Concentrates, warm and gently stir them until completely dissolved.

Washing Buffer (1x)

Pour entire contents (50 ml) of the **Washing Buffer (20x)** into a clean 1,000 ml graduated cylinder. Bring to final volume of 1,000 ml with pure or deionized water.

Mix gently to avoid foaming.

Transfer to a clean wash bottle and store at 2 to 25°C. Washing Buffer (1x) is stable for 30 days.

Assay Buffer (1x)

Pour the entire contents (5 ml) of the **Assay Buffer (10x)** into a clean 100 ml graduated cylinder. Bring to final volume of 50 ml with distilled water. Mix gently to avoid foaming.

Store at 2 to 8°C. Assay Buffer (1x) is stable for 30 days.

Detect Antibody

Mix well prior to making dilutions.

Make a **1: 100** dilution of the concentrated **Detect Antibody** solution with Assay Buffer (1x) in a clean plastic tube.

The diluted Detect Antibody should be used within 30 minutes after dilution.

Streptavidin-HRP

Mix well prior to making dilutions.

Make a **1: 100** dilution of the concentrated **Streptavidin-HRP** solution with Assay Buffer (1x) in a clean plastic tube as needed.

The diluted Streptavidin-HRP should be used within 30 minutes after

dilution.

Sample Dilution: If your samples have high CXCL16 content, dilute serum/plasma samples with Assay Buffer (1×). For cell culture supernates, dilute with cell culture medium.

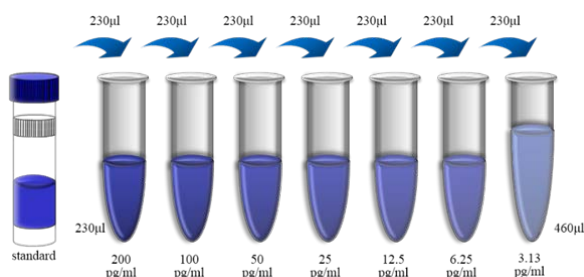
Human CXCL16 Standard: Briefly spin the vial at 6,000 rpm for 30 seconds before opening. Reconstitute Human CXCL16 Standard by addition of distilled water. Reconstitution volume is stated on the label of the standard vial. Swirl or mix gently to insure complete and homogeneous solubilization (concentration of reconstituted standard = 400 pg/ml).

Allow the standard to reconstitute for 10 - 30 minutes. Mix well prior to making dilutions.

Use polypropylene tubes.

● **For serum/plasma samples**, mixing concentrated human CXCL16 standard (230 µl) with 230 µl of Standard Diluent creates the high standard (200 pg/ml). Pipette 230 µl of Standard Diluent into each tube. Use the high standard to produce a 1:1 dilution series (scheme below). Mix each tube thoroughly before the next transfer. Standard Diluent serves as the zero standard (0 pg/ml).

● **For cell culture supernates**, mixing concentrated human CXCL16 standard (230 µl) with 230 µl of cell culture medium creates the high standard (200 pg/ml). Pipette 230 µl of cell culture medium into each tube. Use the high standard to produce a 1:1 dilution series. Mix each tube thoroughly before the next transfer. Cell culture medium serves as the zero standard (0 pg/ml).



[ASSAY PROCEDURE]

Bring all reagents and samples to room temperature before use.

1) Prepare all reagents including microplate, samples, standards and working solution as described in the previous sections.

2) Remove excess microplate strips and return them to the foil pouch containing the desiccant pack, and reseal for further use.

3) Add 300 µl Washing Buffer (1×) per well, and allow it for about 30 seconds before aspiration. Soaking is highly recommended to obtain a good test performance. Empty wells and tap microwell strips on absorbent pad or paper towel to remove excess Washing Buffer (1×). Use the microwell strips immediately after washing. **Do not allow wells to dry.**

4) Add 100 µl 2-fold diluted Standard to Standard well. Add 100 µl Standard Diluent/culture medium to Blank well.

5) **Serum/Plasma:** Add 100 µl of prediluted sample to the sample well.

Cell culture supernates: Add 100 µl cell culture supernates to the sample well. Ensure reagent addition in step 4 and 5 is uninterrupted and completed within 15 minutes.

6) **Seal the plate with an adhesive film.** Incubate at room temperature (25°C±3°C) for 2 hours on a microplate shaker set at 300 rpm.

7) Aspirate each well and wash by filling each well with 300 µl Washing Buffer (1×), repeat five times for a total six washes. Complete removal of liquid at each step is essential to the best performance. After the last wash, remove any remaining Washing Buffer (1×) by aspirating or

decanting. Invert the plate and tap it against clean paper towels.

8) Add 100 µl of diluted Detect Antibody to each well.

9) Seal the plate with an adhesive film. Incubate at room temperature (25°C±3°C) for 1 hour on a microplate shaker set at 300 rpm.

10) Repeat aspiration/wash as in step 7.

11) Add 100 µl of diluted Streptavidin-HRP to each well.

12) Seal the plate with a fresh adhesive film. Incubate at room temperature (25°C±3°C) for 45 minutes on a microplate shaker set at 300 rpm.

13) Repeat aspiration/wash as in step 7.

14) Add 100 µl of Substrate Solution to each well. Incubate for 5 - 30 minutes at room temperature (25°C±3°C). **Protect from light.**

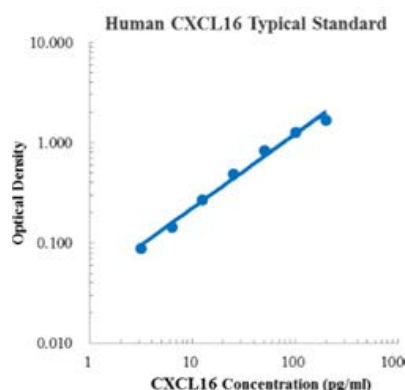
15) Add 100 µl of Stop Solution to each well. The color will turn yellow. If the color in the well is green or if the color change does not appear uniform, gently tap the plate to ensure thorough mixing.

16) Measure the optical density value within 30 minutes by microplate reader set to 450 nm. If wavelength correction is available, set to 570 nm or 630 nm. If wavelength correction is not available, subtract readings at 570 nm or 630 nm from the readings at 450 nm. This subtraction will correct for optical imperfections in the plate. Reading directly at 450 nm without correction may generate higher concentration than true value.

[TYPICAL DATA]

A standard curve must be run within each assay. The following standard curve is provided for demonstration only.

pg/ml	O.D.	Average	Corrected
0.00	0.083	0.079	0.081
3.13	0.171	0.169	0.170
6.25	0.224	0.227	0.226
12.50	0.339	0.363	0.351
25.00	0.565	0.574	0.570
50.00	0.904	0.948	0.926
100.00	1.343	1.363	1.353
200.00	1.767	1.774	1.771



MULTI SCIENCES BIOTECH CO., LTD.

www.multisciences.net

E-mail: service@multisciences.net