

Annexin V-PE/7-AAD apoptosis kit

Product Information

Catalog#	AP104
Size	30Tests/100Tests
expiration date	one year
Storage & Handling	Store between 2°C and 8°C. Do not freeze

Product Description

Annexins are a family of calcium-dependent phospholipid-binding proteins that preferentially bind phosphatidylserine (PS). Under normal physiologic conditions, PS is predominantly located in the inner leaflet of the plasma membrane. Upon initiation of apoptosis, PS loses its asymmetric distribution across the phospholipid bilayer and is translocated to the extracellular membrane leaflet marking cells as targets of phagocytosis. Once on the outer surface of the membrane, PS can be detected by fluorescently labeled Annexin V in a calcium-dependent manner.

Kit Contents

Components	30 T	100 T
Size		
Annexin V-PE	150 uL	500 uL
7-AAD	300 uL	1000 uL
5 × Binding buffer	5 mL	15 mL
Apoptosis Positive Control Solution	5 mL	5 mL

Product For Research Use Only AP104-BP4

Assay Procedure

A. Adjustment of instrument parameters

- 1) Collect 1×10^6 - 3×10^6 cells were centrifuged and washed twice with precooled PBS, and the supernatant was discarded.
- 2) Add 500 μ L Apoptosis Positive Control Solution heavy suspension and incubate on ice for 30 minutes.
- 3) Wash centrifugally with pre-cooled PBS and discard the supernatant.
- 4) Add appropriate amount of precooled $1 \times$ Binding Buffer resuspension, and add the same number of untreated living cells to mix with it. Adding precooled $1 \times$ Binding Buffer to 1.5 mL, it was equally divided into three tubes, of which one tube was blank control tube and two tubes were single dye tube.
- 5) The single dye tube was incubated with 5 μ L Annexin V-PE or 10 μ L 7-AAD at room temperature and away from light for 5 minutes.
- 6) On the flow cytometry, the voltage of FSC, SSC and fluorescence channel is regulated by blank tube, and under this voltage condition, the voltage is regulated by single dye tube. Compensation of fluorescence channels.

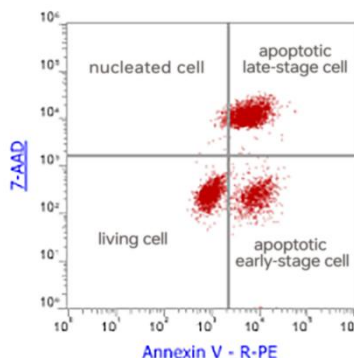
Note: some treatment of adherent cells into single cells will cause damage to the cell membrane, resulting in false positive of Annexin V. therefore.

Optimization is needed. Enzymes that are milder to cells such as Accutase can be used

B. Sample testing

- 1) Apoptosis was induced according to the experimental scheme.
- 2) Wash centrifugally with precooled PBS and collect $1-10 \times 10^5$ cells (including cells in the culture supernatant). Dilute $5 \times$ Binding with double distilled water. Buffer is $1 \times$ working solution, and 500 μ L $1 \times$ Binding Buffer resuspension cells are taken.
- 3) 5 μ L Annexin V-PE and 10 μ L 7-AAD were added to each tube.
- 4) After mixing gently and swirling, incubate at room temperature away from light for 5 minutes.
- 5) According to the experimental method, flow analysis is carried out.

Product Data



Staining the Camptothecin-stimulated HL-60 cells with Annexin V-PE and 7-AAD, Total viable cells were used for analysis.

Matters needing attention.

1. Please read the instructions carefully before using this product. This product is only used for scientific research, not for diagnosis.
2. For your safety and health, please wear experimental protective clothing, gloves, masks and other necessary protective equipment.
3. For more apoptosis-related products, please follow the UNOCI biology website or call for advice.

Some related products

Catalog	Product Name	Size
AP101C	AnnexinV-FITC/PI Apoptosis Kit(Exclusively for BD Accuri C6)	30T/100T
AP104	AnnexinV-PE/7-AAD Apoptosis Kit	30T/100T
AP105	AnnexinV-APC/7-AAD Apoptosis Kit	30T/100T
AP107	Annexin V-APC/PI Apoptosis Kit	30T/100T
CCS012	Cell Cycle Staining Kit	50 T
MJ101	Mitochondria Staining Kit	125 T

Product For Research Use Only AP104-BP4